

2017 Annual Review



stl village

COMMUNITY | CONNECTION | CARING



Reframing Aging

STL Village members are embracing aging. The media so often leads us to believe that aging is a phenomenon to be dreaded. Yet, studies show that we're happier as we age. In years past, retirement often meant spending hours in a rocker while watching game shows on television. However, we are experiencing a paradigm shift with older adults living active and enriching lives while contributing endless hours of volunteer service to our communities.

STL Village recently celebrated our third year of operation. Anniversaries are a great time to reflect on our past accomplishments and lessons learned as well as look forward to the future. Over these past three years, STL Village has experienced growth in our activities and services offered. However, the most commendable success that we have achieved is forming a village of dynamic older adults who are creating an environment filled with arts, wellness, lifelong learning, and a sense of community.

STL Village members are reframing aging and rejecting past societal stereotypes of older adults. STL Village members are a very active group who enjoy giving back to their community. Our members are involved in a myriad of positive and productive ventures. Two members of STL Village created and presently maintain the Central West End Farm which annually raises over 2000 pounds of produce for local food pantries. STL Village members volunteer at homeless shelters, food pantries, animal rescue centers, and direct prison theater performances. Our members are involved with civic organizations and boards and serve as advocates for issues affecting older adults. STL Village members volunteer at their churches and at hospitals. These are just a few examples of the contributions our members are making to the St. Louis community.

STL Village is looking forward to an even greater fourth year of operation. We are excited about our new associate membership that will allow our village to expand. STL Village welcomes new members, volunteers, and donors. We hope that you will consider joining us as we embrace aging in the St. Louis metropolitan region.

Sincerely,

Madeline Franklin
STL Village Executive Director

OUR VILLAGE BY THE NUMBERS:



70 members



27 volunteers



204 services provided



74 activities & events



92 donors



10 new members

THANK YOU 2016-2017 DONORS!

STL Village thanks all of our generous donors for your gifts during this past year. Your financial support enabled us to further our mission of supporting older adults in the metropolitan St. Louis community who desire to age in place in the homes and neighborhoods they love.

Edward & Peggy Morris
 Nancy Morrow-Howell
 Travis Mowers
 Kathryn Paar
 Linda Pinsker
 Barbara Prosser
 Darryl Redhage
 Anne Rowe
 Darcell Scharff
 Joseph & Annie Schlafly
 Debra K. Schuster & Associates
 Bruce & Lily Seymour
 David & Betty Singer
 Francis & Tegner Stokes
 Anneliese Stoever
 Arlene Zarembka & Zuleyma Tang-Martinez
 Mary Ann Tipton
 Melody Walker
 Sherrill Wayland
 Lois Yatzeck
 Age at Home Care
 BSI Construction
 Coldwell Banker Gundaker Realtors
 Harvey A. Friedman Center for Aging
 Griswold Home Care
 Metaphase Design Group
 Moneta Group
 Parkway Hotel
 PARIC Corporation
 Pooley Accounting Services
 Renaissance Financial
 West Pine Pharmacy
 World Chess Hall of Fame

\$10,000 and above

Wells Fargo Advisors
 Kuhlmann Leavitt, Inc.

\$1,000 to \$4,999

Edmund Acosta
 Arthur & Nancy Culbert
 John & Alison Ferring
 Lisa Hansen
 Ken & Nancy Kranzberg
 Rob Leavitt & Deanna Kuhlmann-Leavitt
 George & Sally Nikolajevich
 William & Gina Wischmeyer
 BJC Healthcare
 Opus Foundation
 St. Andrew's Resources for Seniors
 West End Advisory Group

\$999 and under

Bruce & Elizabeth Backus
 Ron Barrett
 Judith Bender
 Beverly Berner
 Sondra Bertz
 Robert & Kristie Blaha
 Jane Burton
 Thomas & Sarah Cohn
 Wade & Bea Crowder
 Chandler (Durb) & Ellen Curlee
 John David
 Frank Dayton
 Mary Dinauer
 Robert & Deborah Dolgin
 Robert "Mac" Findeiss
 Anna Forder
 Hazel Forster
 Beverley Foster
 Madeline Franklin
 Mary Franklin
 Florence Gaffney
 Natalie Galucia

Barbara Goodman
 Gloria Gordon
 Gary & Sheila Greenbaum
 John Grizzell
 Diana Gualdoni
 Peggy (Margaret) Guest
 Cal Halversen
 Lynn Hamilton
 Jim Tobin & Gina Heagney
 Anne Hetlage
 Stephanie Herbers
 Jennifer Hodges
 Malaika Horne
 Emma Kafalenos
 Bob Powers & Mary Kellogg
 Joe & Maria Koerner
 Jennifer Kovar
 John & Dotty Kuhlmann
 Erica Leisenring
 Robert Mai
 Robert & Maureen McCann
 John & Connie McPheeters
 Thomas Meuser
 Pat Miller

Tributes and Memorials

Honoring a loved one with a gift to STL Village is a great way to continue their legacy by helping others. Some of you may be interested in establishing a deferred gift to STL Village in your will or trust. If you would like information on including STL Village in your estate planning, please contact the STL Village Office.

STL Village Ageless St. Louisan 2017 Henrietta Parram

“Staying active is the key to being healthy and happy at any age.”

— *Henrietta Parram*
St. Louis resident and STL Village member



STL Village Member
Henrietta Parram

A resident of the Fountain Park neighborhood, Henrietta is involved in many community initiatives, from creating butterfly gardens to helping out at a summer camp in the Lewis Place neighborhood. Her enthusiasm and dedication to these and many other causes will be recognized in October, 2017 at the “Ageless Remarkable St. Louisans” event presented by St. Andrews Resources for Seniors.

Henrietta’s love of people is what attracted her to become involved with STL Village. Henrietta commented, “The Village has so many different kinds of activities, something for everybody. It brings people together. It’s all about people, compassionate, kind people. With the Village, I’m not alone. I’ve got a group behind me. It’s given me a new

life. With so much to do – from exercise to wine tasting to museum trips – I’m never bored. And if I need a ride to something, to a doctor’s appointment or to one of the activities, they are there to provide it.”

Henrietta is active on the STL Village Community Engagement Committee, which partners with resident groups on advocacy efforts for improvement projects in the neighborhoods. “We are bringing people together, collaborating to get things done.”

We congratulate Henrietta for receiving special recognition for her work in the community and thank her for inspiring us!

we

**our
members &
volunteers!**

We are always looking for new members and volunteers to grow our Village! Please let us know if you have an idea for a new member event or if you would like to host a recruitment party.

STL Village Members

Edmund Acosta
Ronald Barrett
John Barth
Beverly Berner
Sondra Bertz
Mary Jo Blackwood
Thomas Blackwood
Delores Brown
Elisha Brown
Gail Brown
Mary Bruemmer
Karen Buckey
Dixie Buford
Jean Caine
Arthur Culbert
Nancy Culbert
John David
Frank Dayton
Pamela Dearing
Sandra Felkner
Alison Ferring
John Ferring
Anna Forder
Hazel Forster
Beverley Foster

Thomas Fox
Mary Franklin
Florence Gaffney
Gloria Gordon
Gayle Gray
Lisa Hansen
Mary Lynne Humphries
JoAn Isbell
Thomas Isbell
Emma Kafalenos
Mary Kellogg
Joe Koerner
Maria T. Koerner
Judy Leon
Mary LePage
Jerry McAdams
George Nikolajevich
Sally Nikolajevich
Kathryn Paar
Henrietta Parram
Edward Pepper
Lana Pepper
Linda Pinsker
Robert (Bob) Powers
John Risberg
Mary Risberg

Francine Roden
Carolyn Roedel
Valerie Rutterer
Lisa Satanovsky
Judy Shafir
Lawrence Skinner
Patricia Steger
Francis Stokes
Tegner Stokes
Zuleyma Tang-Martinez
Lois Tegethoff
Mary Ann Tipton
Claudette Walker
Melody Walker
Susan Waugh
Gina Wischmeyer
William Wischmeyer
Lois Yatzeck
Arlene Zarembka

STL Village Volunteers

Jane Baker
Judith Bender
Sondra Bertz
Jon Case

Arthur Culbert
Nancy Culbert
Anna Forder
Hazel Forster
Kathleen Gilson
Kenneth (Jim) Giovanoni
Diana Gualdoni
Lisa Hansen
Mary Lynne Humphries
Genta Iwasaki
William Kasalko
Mary Kellogg
Nancy Kollmar
Mary LePage
Felicia McCain
Sally Nikolajevich
Francoise Oliver
Linda Pinsker
Bob (Robert) Powers
Valerie Rutterer
Janice Schneider
Patricia Steger
Lois Tegethoff

THE VILLAGE IN ACTION!



ROAD TRIP to Bentonville, Arkansas and Crystal Bridges Museum



NOSEY NEIGHBOR TOUR to University City Library Artists Gallery



LECTURE on Downsizing and Decluttering at Selkirk Auctioneers



OLD FASHIONED PICNIC at Tower Grove Park with Gloria Gordon, Melody Walker and Claudette Walker



NOSEY NEIGHBOR TOUR to Montelle Winery, Augusta MO



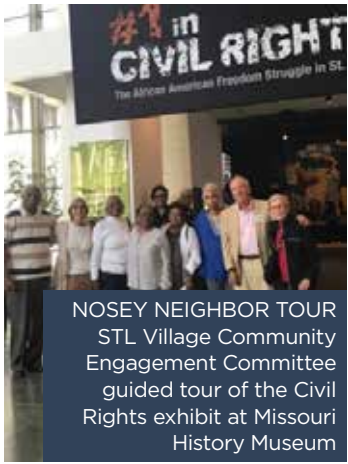
NOSEY NEIGHBOR TOUR to St. Louis Art Museum



HAPPY HOUR at Cheshire Inn



HAPPY HOUR at Bar Louie



NOSEY NEIGHBOR TOUR
STL Village Community
Engagement Committee
guided tour of the Civil
Rights exhibit at Missouri
History Museum



NOSEY NEIGHBOR TOUR
to National Blues Museum,
St. Louis



GROUP FUNDRAISER
at Urban Matters and
Urban Eats



LECTURE on
Avoiding Senior Scams,
Schlafly Library



HOLIDAY POTLUCK Talent Show
featuring the "Village Rappers"



MEET UP at the GO! St. Louis
Mature Mile Walk



Members Nancy Culbert and Mary
Bruemmer enjoy one of their weekly visits

VILLAGE VOLUNTEERISM

Volunteers are the heart of STL Village. Members give their time by providing transportation to other members, helping out at events or participating in one of the community initiatives STL Village is involved in. Non-members are also invited to be part of the Village by sharing their time and talents with our members. We are a village of neighbors caring for neighbors.



STL Village volunteer
drivers Diana Gualdoni,
Mary Lynne Humpries
and Anna Forder



Members Lisa Hansen and Sondra Bertz prepare a
meal at Food Outreach in June, 2017.



Volunteers Kathy Lee-Ivy,
Joanna Stoverink and
Jan Schneider welcome
guests to Village Aglow
2.0 October, 2016.

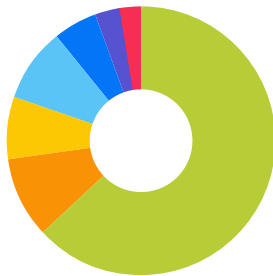
Village Finances

STL Village, like all other organizations, needs money on hand to keep our doors open. Since our inception, STL Village has been fortunate to receive many in-kind donations and gifts which have allowed our organization to grow. We are grateful for the generosity of St. Andrew's Resources for Seniors and Kuhlmann Leavitt, Inc. for their continuous support throughout the years.

The Board of Directors of STL Village adopted a budget of \$85,000 for 2017. Because of our commitment to fiscal responsibility, we have consistently met our financial obligations every year. Thanks to the generosity of our members, Board of Directors, individuals, and business donors, we have continued to operate STL Village in the black.

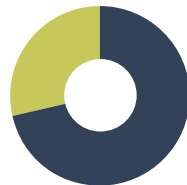
Presently, one third of our total annual revenue comes from membership dues. The remainder of our income is derived from gifts from individual donors, corporations, and foundations. STL Village has received support from Wells Fargo Advisors each year since our founding in furtherance of their commitment to healthy aging.

Finally, the support and countless hours of service from our volunteers makes STL Village operate efficiently and economically. Our annual fundraiser, Village Aglow, has raised thousands of dollars to cover Village operations and fund our Membership Plus (M+) program that supports low and moderate-income seniors.



2016-2017 Totals

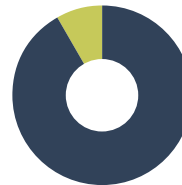
- Operations
- Committee Expenses
- Contracted Services
- Event Expenses
- Facilities & Equipment
- Travel & Meetings
- Other Expenses



**2015
Year Two of
Operations**
(June 30 year end)

Income: \$95,670

- Expenses: \$68,423
- Carryover: \$27,247



**2016
Year Three of
Operations**
(June 30 year end)

Income: \$88,874

- Expenses: \$81,552
- Carryover: \$7,322

Special Acknowledgment Wells Fargo Advisors

A premier financial services firm with over 15,000 advisors nationwide helping clients succeed financially with investment planning and advice to achieve their life needs and financial goals.

Wells Fargo Advisors has demonstrated their commitment to assisting nonprofits in their efforts to strengthen communities, including promoting the healthy aging of older adults in the metro St. Louis area. The company has provided monetary support and expertise to STL Village since our founding.



PHOTO (above)
Guests at Village Aglow 2.0 held at the @4240 Building in the Cortex Innovation Community

A BIG thanks to our Strategic Partners for their generous support!

St. Andrew's Resources for Seniors

A faith-based, not-for-profit organization dedicated to serving seniors in the St. Louis, Missouri area.

"St. Andrew's partnership with STL Village is a natural fit given our experience in senior housing and in-home care. We assist by serving on the Village board as well as sharing our expertise, connections to other organizations, and office space. St. Andrews Senior Solutions services are also available to Village members."

- MARY ALICE RYAN

President and CEO, St. Andrew's Resources for Seniors System, STL Village Board Member

Kuhlmann Leavitt, Inc.

A nationally known and certified woman-owned, multidisciplinary design firm located in St. Louis that creates fresh, intelligent, appropriate design solutions.

"Kuhlmann Leavitt, Inc. is delighted to be a STL Village Strategic Partner. Involved from the beginning, we believe wholeheartedly in the mission and all that the Village has done and continues to do for our community. Aging in place is an ageless endeavor that we are proud to be a part of."

- DEANNA KUHLMANN-LEAVITT

Principal & Lead Designer, Kuhlmann Leavitt, Inc., STL Village Board Member

Committees

Activities

Hazel Forster,
Linda Pinsker,
Co-Chairs
Edmund Acosta
Ron Barrett
Arthur Culbert
Florence Gaffney
Lisa Satanovsky
Pat Steger
Claudette Walker

Development

Lisa Hansen, Chair
Arthur Culbert
Deanna Kuhlmann-Leavitt
Sally Nickolajevich

STL Village Ambassadors

Mac Findeiss,
Anneliese Stoever, Co-Chairs
Edmund Acosta
Mary Jo Blackwood
Arthur Culbert
Nancy Culbert
Mary Kellogg
Jennifer Kovar
Felicia McCain
Sally Nikolajevich
Kathryn Paar
Bob Powers
Lois Tegethoff

Finance

Gail Brown, Chair
Jennifer Kovar

Village Leadership

"We are reflecting on STL Village's first three years of building a strong member-based support organization and how we are growing as a broader resource in the community by making connections with other organizations such as the Harvey A. Friedman Center for Aging, OASIS, AARP, Lewis Place, and Dementia Friendly Community initiatives. Our fourth year will bring associate members into our village as we build even more support for aging in community."

- Jennifer Kovar & Sally Nikolajevich, Board Co-Chairs



Executive Director

Madeline Franklin

Board of Directors

Jennifer S. Kovar, JD,
Co-Chair
Sally Nikolajevich, Co-Chair
Arthur J. Culbert, Ph.D.,
Vice Chair
Melody Walker, Secretary
Gail Brown, Treasurer
Edmund O. Acosta, Ph.D.
Robert 'Mac' Findeiss
Lisa Hansen
Malaika Horne, Ph.D.
Deanna Kuhlmann-Leavitt
Nancy Morrow-Howell, Ph.D.
Mary Alice Ryan
Anneliese Stoever
Gloria C. Gordon, Ph.D.,
Board Member Emeritus
Natalie Galucia, Ex Officio

STL Village Office Staff

Sondra Bertz
Sharon James
Linda Pinsker
Dazell Wilkins

Community Engagement

Gail Brown
Pat Cox
Gloria Gordon
Malaika Horne
Henrietta Parram
Pam Talley
Lois Yatzcek

Marketing

Liz Backus, Chair
Edmund Acosta
Tom Conti
Diana Gualdoni
Lisa Hansen
Travis Mowers
Melody Walker

STL Village Annual Review

A publication of STL Village
6633 Delmar Boulevard,
2nd Floor
St. Louis, MO 63130
info@stlvillage.org
314-802-0275
stlvillage.org
Copyright © 2017, All rights reserved

STL Village does not discriminate on the basis of race, color, religion, gender, gender identity, national origin, age, veteran status, marital status, familial status, disability/handicap, or sexual orientation.



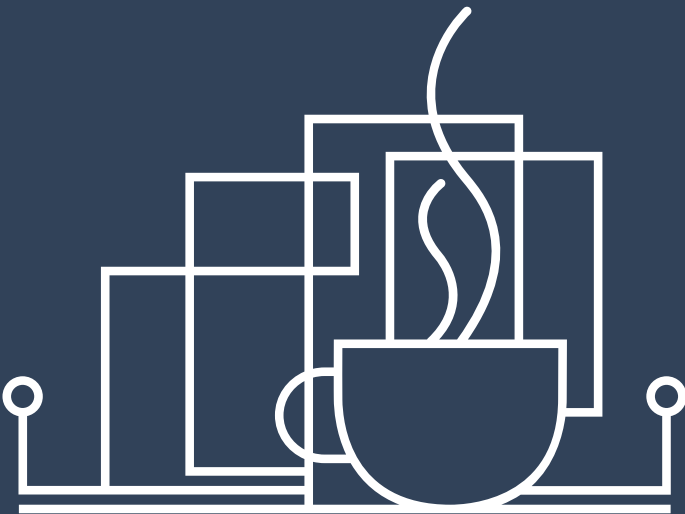
stl village

6633 Delmar Boulevard
Saint Louis, Missouri 63130

www.stlvillage.org

2017 Annual Review

Save the date!



VILLAGE AGLOW

AN EVENING TO BENEFIT STL VILLAGE

18 OCTOBER 2017 / 6:00 TO 8:00PM
@ THE ROASTERY : KALDI'S COFFEE

Tickets: info@stlvillage.org or (314) 802-0275

Inside this Issue: 2017 Annual Review

[Photos](#) | [Activities](#) | [Donors](#) | [Members](#) |
[Volunteers](#) | [Committees](#) | [Supporters](#) |
[Partners](#) | [Finances](#) | [Outlook](#)



What is STL Village?

STL Village is a not-for-profit, member-driven community network that helps people 50+ age in their own homes with 24-7 phone/click access to a full range of activities and support services.

Not yet a member?

Visit us online at stlvillage.org to learn more or call us at 314-802-0275.